

# THE TIMES Walking Guide



## Ullswater, Lake District

**BLISTER RATING**

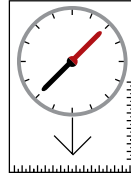
**Route** Martindale - Patterdale **County** Cumbria  
**Difficulty** Moderate **Distance** 15km (9.5miles)  
**Typical Time** Four hours **OS Grid Reference** NY434184,  
Explorer OL 5 The English Lakes NE Area **Starting Point**  
The parking spot by the church near Howton

**VIEW RATING**

**Things to see** Everything that the Lake District has to offer - quaint villages, crags, waterfalls, lakes and pastures

**PUB RATING**

**White Lion pub, Patterdale** The only pub in Patterdale was where Wordsworth supposedly heard the news of Nelson's death at Trafalgar. Steak and breakfasts are renowned



**1** Park at the little church near Howtown. From the church, continue along the little twisting road into Bore Dale. As you go up the valley, it starts off easy, like a Beatrix Potter watercolour, all smooth and yummy. But as you go up, the fields and farmhouses run out and it gets wilder — but not scary.

**2** At the head of the valley, go through the Hause, or pass. Once over the top, bear right for Patterdale. The paths tend to disappear on the top, but head right till you start to come down, and pick up a path under the flanks of Place Fell down to Patterdale.

**3** Follow the lake along a totally amazing path which twists and turns, following the shape of the lake.

**4** At Sandwick, turn right, up the little road, and back to your car.

